



Enforcement Actions



Bringing together waste shipment inspection officers is the main success of the Enforcement Actions project. It has the support and participation of over thirty environmental regulators of the 'Transfrontier Shipment-directive (TFS)' across Europe. This team of regulators co-ordinate efforts to prevent, deter and enforce illegal waste shipments within, into and out of the European Union.

Background

The European Regulation (EC) No 1013/2006 on shipments of waste concerns the prevention of the illegal shipment of waste. Obligations are placed on Member States to carry out waste shipment inspections, to cooperate with each other and to deter illegal shipments. The Enforcement Actions Project is inspection project under the umbrella of IMPEL expert team on *Waste & TFS*.

Content in Brief

The project covers the following aspects:

- **Co-ordinated inspections** during three months in 2014 & 2015 to provide a 'snapshot' of inspection data revealing the problematic shipment routes and waste types, and the destinations of important waste streams.
- An **adequate level of inspections** with other competent authorities, such as Police and customs, on waste shipments (ports, trains, companies and road traffic).
- A **chain approach**. The competent authorities check sites of loading and storage, verify transport arrangements and inspect the final recovery facility.
- **Open and transparent communication**. Stakeholders and interested parties will receive information about this project and its inspections. There are bi-monthly online meetings and newsletters for participants.
- An **Annual best practice meeting**.

Target Group

Waste shipment
inspectors

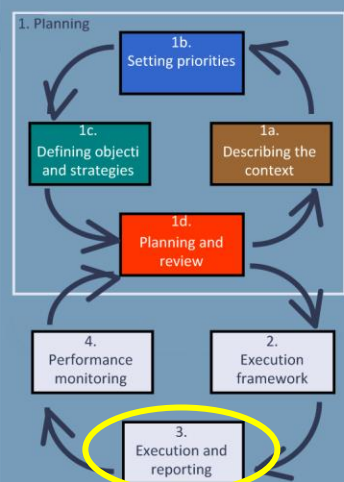
EU Legislation

Regulation
1013/2006/EC on
shipments of waste

Publication date

2016

Inspection Cycle





European Union Network for
the Implementation and Enforcement
of Environmental Law

- **32 exchanges of front-line inspectors** during inspections periods. The focus will be on bringing new countries in to the project and inspecting waste streams and illegal routes of mutual concern between countries.
- **Cooperation at borders.** Neighbouring countries will be asked to arrange border inspections in an effort to increase participation.
- **Inspection tools.** Clear guidance will be drafted on repatriations of illegally shipped waste to streamline the process. New field tools such as the Waste (s)Watch (pictured below) and inspection reporting forms will also be provided to field officers.

Key Points

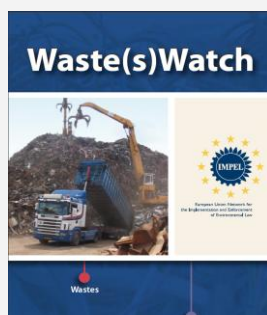
The project primarily seeks to maintain and improve the network of front line waste shipment inspectors, inspection methods, exchange of information and inspectors' knowledge on the Waste Shipment Regime. Co-operation with other regulatory authorities continues to develop within the project, with Police and Customs officers frequently having taken part in joint inspections.

The project focuses on the importance of cross-border and regional co-operation. Joint inspections and officer exchanges foster this. Officers from newly participating countries benefit from the expertise of other countries with established teams.

The snapshot inspection data are important in highlighting the areas of weakness in inspection regimes and focussing future inspections so that they are more effective.

Participants share their experiences with their project colleagues by emails, news messages and in webinars. The webinars help to exchange best practice and make authorities aware of the procedures and evidence needed in different jurisdictions. Participants are encouraged to disseminate their experiences in their own countries.

The IMPEL-TFS Manual for 'the return of illegal shipments of waste' is also being re-drafted under the project. It will provide authorities with a streamlined approach to returning illegal shipments of waste to the country of origin, or otherwise process the waste locally in an environmentally sound manner.



Links

[IMPEL TFS Enforcement Actions III project](#)

Contact:

Katie.Olley@sepa.org.uk

Key words

- Waste shipments
- Transfrontier shipment
- Co-operation
- Illegal shipment
- Enforcement Actions
- Frontline inspectors