



DTRT Tool

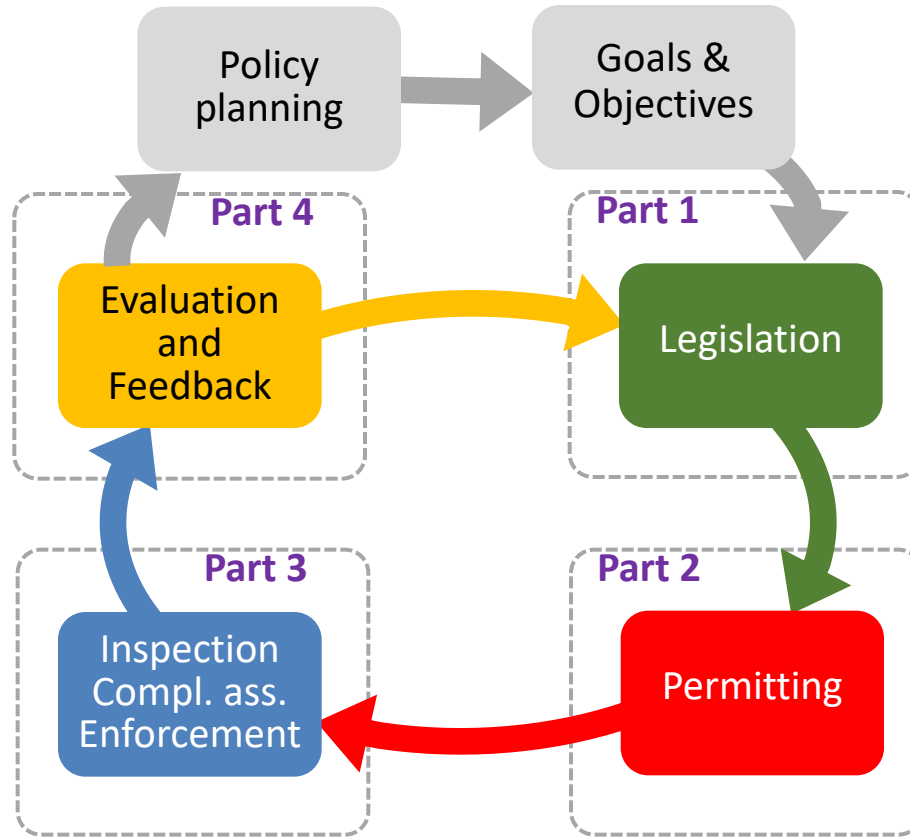
Combined guidance on Implementation of the IED

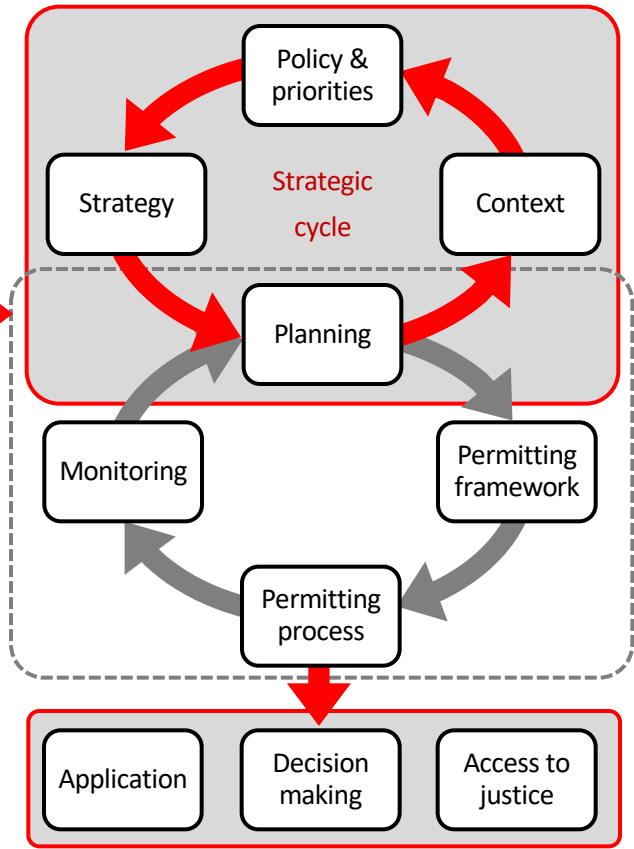
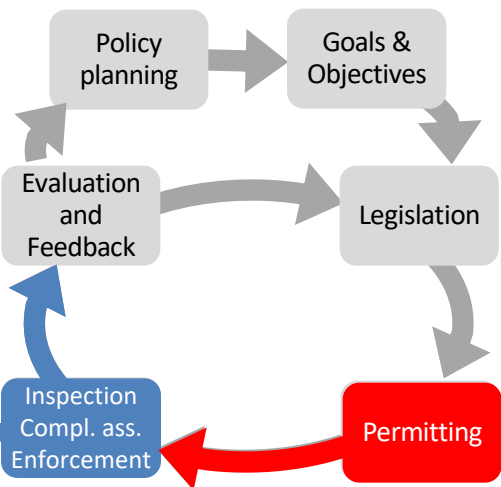
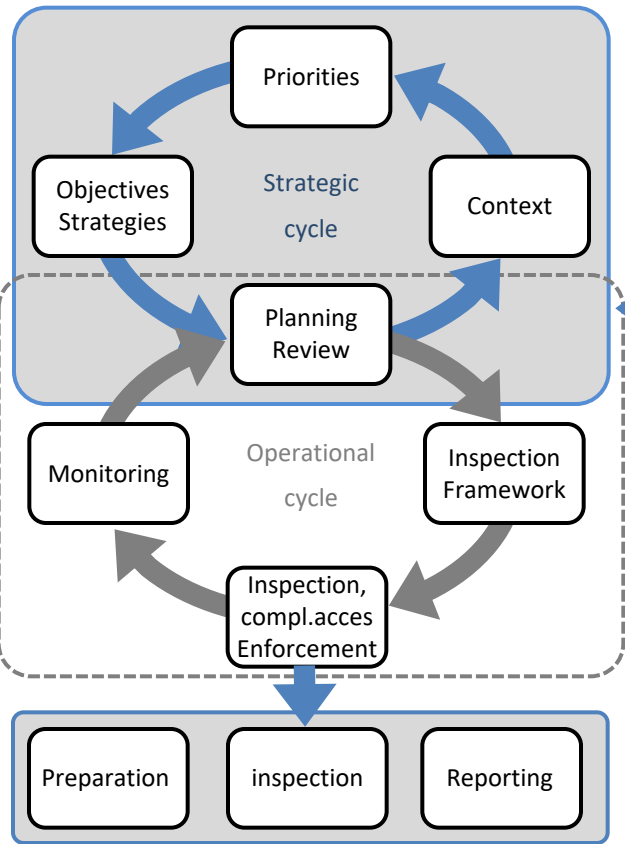
Rob Kramers

Zwolle, 26th October 2018

Explaining the implementation
of the IED

By using the Regulatory Cycle

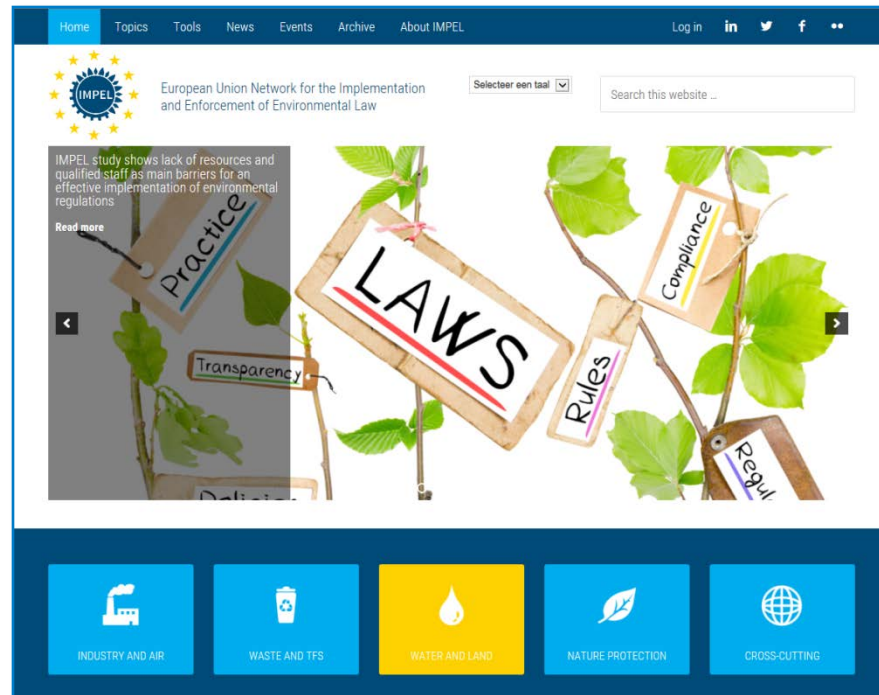




The content of the guidance

- 2 pages per step (web pages)
- References to factsheet, good practises and IMPEL reports

Combined guidance online





Regulatory Cycle

Permitting and Inspection

Better regulation

IMPEL Review Initiative

ementation
aw

Search this website ...

IMPEL's Next Generation
latest updates

[Read more](#)



INDUSTRY AND AIR



WASTE AND TFS



WATER AND LAND



NATURE PROTECTION



CROSS-CUTTING

Thank you for your attention!