



NPRI THE NETHERLANDS

An initiative of the Association of Regional
Environmental Protection Agencies (ODNL)

CONTENT

- NPRI why?
- Framework
- Results
- The future



NPRY WHY?

- Improving quality of work
- Mutual learning
- Advice on improvement law/working methods
- Report on state of play on individual as well national level

FRAMEWORK

- 9 pouls
- 3 visits Januari-September
- Central theme for all; 2018 strategies on permitting, inspection and enforcement (questionnaire)
- Other topics chosen by host
- Reporting (national level) Oktober-December

WE REMAIN FRIENDS....



- 2012-2017 network period, staff decentralized and employed by 12 proper authorities;
- Programme steering at central level
- 2018 on, staff employed by the agency
- We remain friends, but can we develop in this perspective into the future?

- 
- Omgevingsdienst**
IJSELLEND

FOCUS ON LONG TERM



- Good atmosphere makes it possible to think and develop into the future. A good balance between short and mid/longterm
- Investing in ICT, offices (also decentral), culture and common values

CUSTOMMER RELATION AND COMMON INTERESTS HAND-IN-HAND



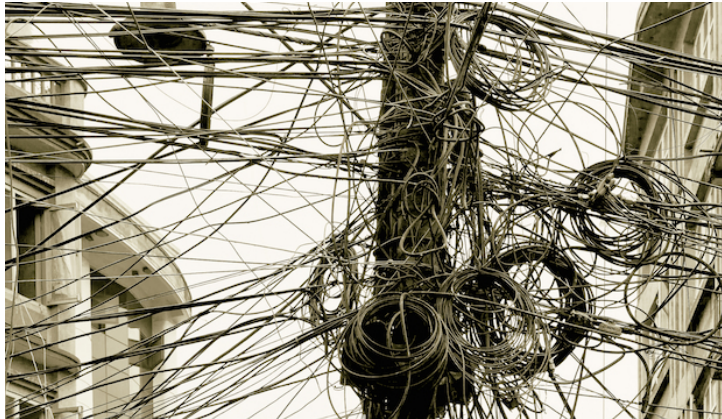
- 12 customers demanding a good product
- 12 customers are also partners, there is an eye on common interest as developing good quality, level playing field and a contribution to local economy;
- We are exploring what this means for our working relation, duties, responsibilities and results

ANALYSIS



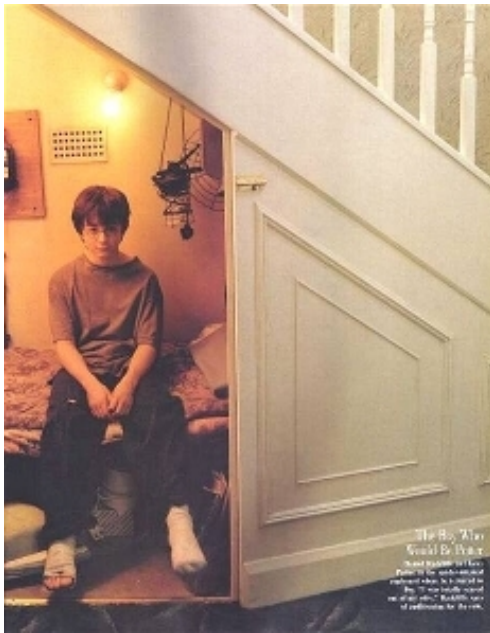
- Done on inspection and enforcement
- Still to do on permitting

DATAQUALITY NOT OK



- From mid 2017 new ICT instrument
- The machine works
- Data-quality (transition from old databases to new and lack of data) is major problem to us all (12 proper authorities and REPA)
- 2018 base quality
- 2019 onwards development

PROFESSIONAL WORKSPACE



- Central office (60 workstations)
- Decentral (24 workstations)
- Working in the field
- Working at home
- Challenge by increasing numbers of staff is to remain a professional working space that supports what is necessary on that time/place/duty for the professional

OWNERSHIP



- The REPA is our REPA